

# CHU THE PHAT



FUNCTION PACK



# FUNCTIONS AT CHU THE PHAT

Chu the Phat offers an authentic Asian street food experience with a modern dining flair. The venue, set over two large levels, is connected by an expansive steel spiral staircase and hosts an exciting atmosphere, with a combination of traditional Asian decorations and modern interior design.

The eclectic and exciting venue can cater events for groups of 20 to 400 with a range of unique spaces, including a laneway and outdoor bar connecting bustling Melbourne Street with trendy Fish Lane. Chu the Phat also offers a large mezzanine dining space, and an intimate bar area on the lower level.

Come and experience a taste sensation set to take your palate to new heights, with a menu set to delight, excite and surprise the senses. There's no doubt Chu the Phat is perfect for your next function, so come in and view the beautiful spaces available.

Contact our functions team at [Functions@ChuThePhat.com.au](mailto:Functions@ChuThePhat.com.au) or on 07 3255 2075 to book an appointment.



To book today please contact Chu The Phat [Functions@ChuThePhat.com.au](mailto:Functions@ChuThePhat.com.au) or call **07 3255 2075**





# FUNCTION SPACES

## DOLL HOUSE BAR

UP TO 100 GUESTS COCKTAIL STYLE

The perfect space with limitless possibilities and the freedom to move inside or outside.

## MELBOURNE CROSSLINK

UP TO 50 GUESTS COCKTAIL STYLE

This laneway is perfect for intimate celebrations with family, friends or clients, with private bar access.

## MEZZANINE DINING

UP TO 200 GUESTS SIT DOWN STYLE

Upstairs dining area with seating and access to Fish Lane.

## ENTIRE VENUE

UP TO 400 GUESTS COCKTAIL STYLE  
UP TO 300 GUESTS SIT DOWN STYLE

Exclusive use of the entire venue.



To book today please contact Chu The Phat [Functions@ChuThePhat.com.au](mailto:Functions@ChuThePhat.com.au) or call **07 3255 2075**



# BEVERAGE OPTIONS

Cash bar and bar tab on consumption (min spend applies) also available

## Silver Package

2 HOURS \$45 PER PERSON  
3 HOURS \$60 PER PERSON  
4 HOURS \$70 PER PERSON

### *Sparkling Wine*

Morgan's Bay Sparkling

### *White Wine*

Morgan's Bay Semillon Sauvignon Blanc

### *Red Wine*

Morgan's Bay Shiraz Cabernet

### *Tap Beers*

Chu Creepy Doll Lager  
Asahi - 4 Pines Pacific Ale  
4 Pines Pale Ale - Balter XPA

### *Post Mix Soft Drink & Juices*

Add a cocktail on arrival for \$15

## Gold Package

2 HOURS \$55 PER PERSON  
3 HOURS \$70 PER PERSON  
4 HOURS \$80 PER PERSON

### *Sparkling Wine* (Choose One)

Edmond Thery Blanc de Blanc  
Villa Sandi Prosecco

### *White Wine* (Choose One)

Mr Mick Pinot Grigio  
Squealing Pig Sauvignon Blanc

### *Red Wine* (Choose One)

Seppelt The Stag Pinot Noir  
Wynns The Gables Cabernet Sauvignon

### *Tap Beers*

Chu Creepy Doll Lager  
Asahi - 4 Pines Pacific Ale  
4 Pines Pale Ale - Balter XPA  
Brookvale Union Alcoholic Ginger Beer

### *Post Mix Soft Drink & Juices*

Add a cocktail on arrival for \$15

## Platinum Package

2 HOURS \$70 PER PERSON  
3 HOURS \$90 PER PERSON  
4 HOURS \$110 PER PERSON

### *Champagne*

Mumm

### *White Wine* (Choose One)

Shaw + Smith Sauvignon Blanc  
Tim Adams Pinot Gris

### *Red Wine* (Choose One)

Red Claw Pinot Noir  
Wolf Bass Merlot  
Howard Park Leston Cabernet Sauvignon  
Pepperjack Shiraz

### *Tap Beers*

Chu Creepy Doll Lager  
Asahi - 4 Pines Pacific Ale  
4 Pines Pale Ale - Balter XPA  
Brookvale Union Alcoholic Ginger Beer

### *Post Mix Soft Drink & Juices*

Add a cocktail on arrival for \$15

Products are subject to availability and Chu The Phat reserves the right to change products at any time without notice on all packages.

# CHU

To book today please contact Chu The Phat [Functions@ChuThePhat.com.au](mailto:Functions@ChuThePhat.com.au) or call **07 3255 2075**



# FOOD OPTIONS

## COCKTAIL STYLE

### PACKAGES

#### CANAPÉS \$25 PER PERSON

choose five canapés

#### CANAPÉS + SMALL BOWL \$35 PER PERSON

choose five canapés & one starter bowl

#### CANAPÉS + MAIN BOWL \$40 PER PERSON

choose five canapés & one main bowl

#### CANAPÉS + SMALL BOWL + MAIN BOWL \$50 PER PERSON

choose five canapés, one starter bowl & one main bowl

#### DESSERT BOWL \$10 PER PERSON

choose one dessert bowl

#### CANAPÉS (Choose Five)

steamed duck buns  
sweet corn & coriander dumplings  
vegetable spring rolls  
fried chicken ribs  
18 spice LA cut pork ribs  
wagyu dumplings  
chips  
panko crumbed prawns

#### SMALL BOWLS (Choose One)

mung bean pancakes  
poached chicken salad  
chu fried rice  
steamed greens  
half shell tasmanian scallops  
salmon tartare

#### MAIN BOWLS (Choose One)

nanna annas chilli chicken  
stir fried jack's creek black angus  
steamed tofu  
stir fried chicken  
apple glazed beef ssam  
coral coast barramundi  
steamed pumpkin  
braised beef cheeks

#### DESSERT BOWLS

chocolate bun



*Chu The Phat can cater for a variety of dietary requirements including vegetarian options and gluten free options. We are happy to discuss how we can tailor any special dietary requirements into your package. Menus are subject to change due to seasonal availability.*

# CHU

To book today please contact Chu The Phat [Functions@ChuThePhat.com.au](mailto:Functions@ChuThePhat.com.au) or call **07 3255 2075**

# FOOD OPTIONS

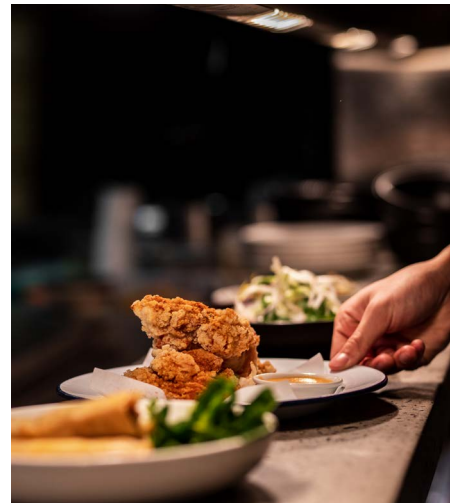
## SIT DOWN

### BANQUET 1 \$58 PER PERSON

vegetable crackers  
steamed duck buns  
vegetable spring rolls  
sweet corn & coriander dumplings  
fried chicken ribs  
steamed pumpkin  
roast pork belly  
cold broccoli & sesame  
steamed market greens  
steamed rice

### BANQUET 2 \$75 PER PERSON

oysters  
salmon tartare  
half shell tasmanian scallops  
wagyu dumplings  
poached chicken salad  
stir fried jack's creek black angus flank  
coral coast barramundi  
marinated cucumber & garlic  
steamed market greens  
steamed rice  
chocolate custard



*Chu the Phat can cater for a variety of dietary requirements including vegetarian options and gluten free options.*

*We are happy to discuss how we can tailor any special dietary requirements into your package. Menus are subject to change due to seasonal availability.*

# CHU

To book today please contact Chu The Phat [Functions@ChuThePhat.com.au](mailto:Functions@ChuThePhat.com.au) or call **07 3255 2075**





# FUNCTION EXTRAS

## Audio Visual / Decorating

**microphone** we have two microphones available for speeches, presentations or q&a sessions. please note - microphones can only be used if functions have exclusive use of an area to avoid disrupting other guests.

**music connectivity** set up your playlist and on your music to listen to all your favourite tunes. this is only available to functions which have booked the full venue, all of upstairs, or the full Dollhouse bar.

**television (including cables)** we have a number of wide screen tvs that can be used for presentations.

**red carpet** the perfect entrance for any function!

**customised printed menus** we can print food and drinks menus for your guests to enhance their dining experience.

## Entertainment\*

**photo booth /photographer** ask us about hiring a photobooth or a roaming photographer to capture precious memories of your event.

**magician** whatever entertainment you are after, please talk to us as we have connections with many entertainment companies to enhance your function.

**Ice sculptures/decorations**

**limo/ luxury car** want to arrive or depart your event in style? We can organise a limousine or luxury car to make it extra special.

**planning for the event** let us know if you would like help on planning your event.

# CHU

To book today please contact Chu The Phat [Functions@ChuThePhat.com.au](mailto:Functions@ChuThePhat.com.au) or call **07 3255 2075**

# CHU THE PHAT

07 3255 2075  
111 Melbourne St,  
South Brisbane Q 4101  
[www.ChuThePhat.com.au](http://www.ChuThePhat.com.au)

